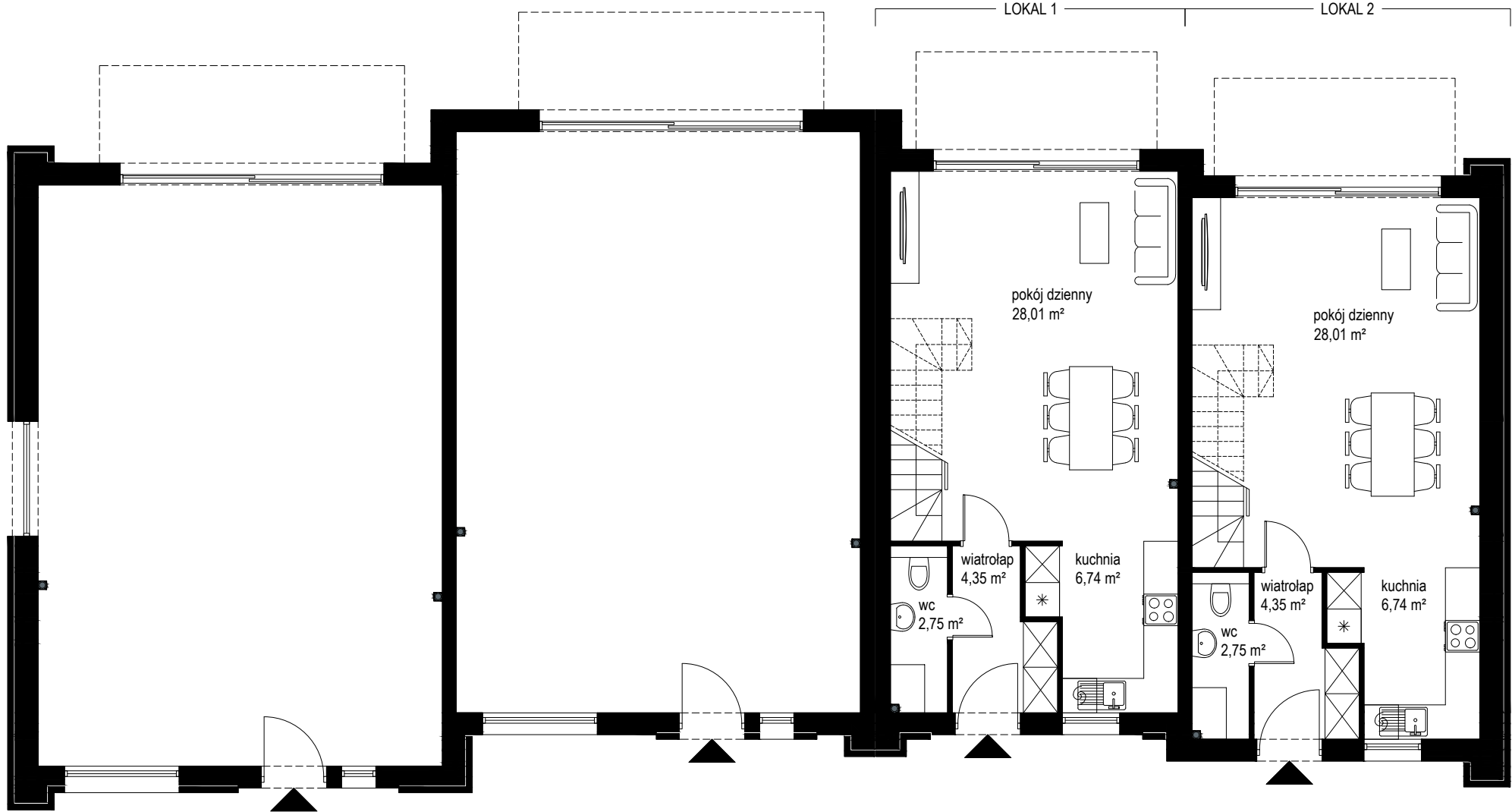
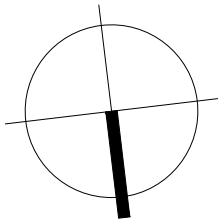


BUDYNEK PRAWY



ZESTAWIENIE POWIERZCHNI:

LOKAL 1	LOKAL 2
PU parter = 41,85 m2	PU parter = 41,85 m2
PU piętro = 39,42m2	PU piętro = 39,42 m2
SUMA = 81,27 m2	SUMA = 81,27 m2



PARTER